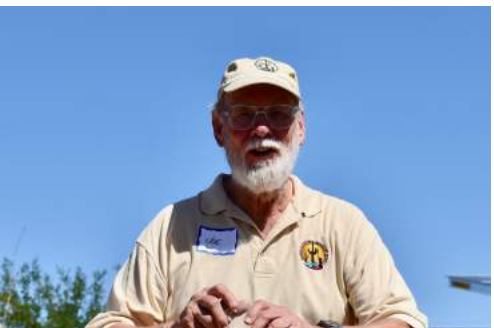




Great Day at Pima Prickly Park

CELEBRATING 20 years of CACTUS RESCUES.
Thank you all!





Celebrating CACTUS RESCUES

Photos by Caryl Jones



Tucson Cactus and Succulent Society

Celebrating 20 Years Of The

Cactus Rescue Crew Program

Event Photos by John Durham
of the Celebration Event Held At

Pima Prickly Park

October 5, 2019 - 10 AM to 2 PM



Day's Events

10:00 a.m. – 2:00 p.m.
Pima County Nursery
5845 N. Camino de la Tierra

Free plants-one per person
Make Seed Balls

Arizona Native Plant Society - Game
"What's my Seed"

Vendor Member Plant sale

10:30 – 11:00 a.m.
Speaker Program at The Hub – Pima Prickly Park


11:15 a.m. – 1:15 p.m.
Flute Club in the Park

12:30 p.m.
Guided Tour of Pima County Nursery - Jessie Byrd

Food trucks: Drew's Dogs and Peddler on the Path
Living with Urban Wildlife Trailer
Posters of Rescues and Pima Prickly Park-NRPR lobby
Commemorative T-shirts and Bandanas for sale



Tucson Cactus and Succulent Society
Cactus Rescue Crew - Rescue Sites
Celebrating 20 Years Saving Over 98,000 Cactus



Some Interesting TCSS Cactus Rescue Crew Facts

- Our Cactus Rescue Crew has rescued over 98,000 plants since 1998.
- We have 100+ TCSS chapters in southern Arizona and New Mexico.
- Our chapters and groups have saved over 98,000 cactus and succulent plants.
- The Crew has rescued over 98,000 plants.
- Many members are also involved in other conservation efforts.
- TCSS has been instrumental in the creation of the Tucson Botanical Garden.
- TCSS has been instrumental in the creation of the Tucson Botanical Garden.
- TCSS has been instrumental in the creation of the Tucson Botanical Garden.

TCSS Cactus Rescue Crew - Rescue Sites

1. Tucson Botanical Garden

2. Tucson Botanical Garden

3. Tucson Botanical Garden

4. Tucson Botanical Garden

5. Tucson Botanical Garden

6. Tucson Botanical Garden

7. Tucson Botanical Garden

8. Tucson Botanical Garden

9. Tucson Botanical Garden

10. Tucson Botanical Garden

11. Tucson Botanical Garden

12. Tucson Botanical Garden

13. Tucson Botanical Garden

14. Tucson Botanical Garden

15. Tucson Botanical Garden

16. Tucson Botanical Garden

17. Tucson Botanical Garden

18. Tucson Botanical Garden

19. Tucson Botanical Garden

20. Tucson Botanical Garden

21. Tucson Botanical Garden

22. Tucson Botanical Garden

23. Tucson Botanical Garden

24. Tucson Botanical Garden

25. Tucson Botanical Garden

26. Tucson Botanical Garden

27. Tucson Botanical Garden

28. Tucson Botanical Garden

29. Tucson Botanical Garden

30. Tucson Botanical Garden

31. Tucson Botanical Garden

32. Tucson Botanical Garden

33. Tucson Botanical Garden

34. Tucson Botanical Garden

35. Tucson Botanical Garden

36. Tucson Botanical Garden

37. Tucson Botanical Garden

38. Tucson Botanical Garden

39. Tucson Botanical Garden

40. Tucson Botanical Garden

41. Tucson Botanical Garden

42. Tucson Botanical Garden

43. Tucson Botanical Garden

44. Tucson Botanical Garden

45. Tucson Botanical Garden

46. Tucson Botanical Garden

47. Tucson Botanical Garden

48. Tucson Botanical Garden

49. Tucson Botanical Garden

50. Tucson Botanical Garden

51. Tucson Botanical Garden

52. Tucson Botanical Garden

53. Tucson Botanical Garden

54. Tucson Botanical Garden

55. Tucson Botanical Garden

56. Tucson Botanical Garden

57. Tucson Botanical Garden

58. Tucson Botanical Garden

59. Tucson Botanical Garden

60. Tucson Botanical Garden

61. Tucson Botanical Garden

62. Tucson Botanical Garden

63. Tucson Botanical Garden

64. Tucson Botanical Garden

65. Tucson Botanical Garden

66. Tucson Botanical Garden

67. Tucson Botanical Garden

68. Tucson Botanical Garden

69. Tucson Botanical Garden

70. Tucson Botanical Garden

71. Tucson Botanical Garden

72. Tucson Botanical Garden

73. Tucson Botanical Garden

74. Tucson Botanical Garden

75. Tucson Botanical Garden

76. Tucson Botanical Garden

77. Tucson Botanical Garden

78. Tucson Botanical Garden

79. Tucson Botanical Garden

80. Tucson Botanical Garden

81. Tucson Botanical Garden

82. Tucson Botanical Garden

83. Tucson Botanical Garden

84. Tucson Botanical Garden

85. Tucson Botanical Garden

86. Tucson Botanical Garden

87. Tucson Botanical Garden

88. Tucson Botanical Garden

89. Tucson Botanical Garden

90. Tucson Botanical Garden

91. Tucson Botanical Garden

92. Tucson Botanical Garden

93. Tucson Botanical Garden

94. Tucson Botanical Garden

95. Tucson Botanical Garden

96. Tucson Botanical Garden

97. Tucson Botanical Garden

98. Tucson Botanical Garden

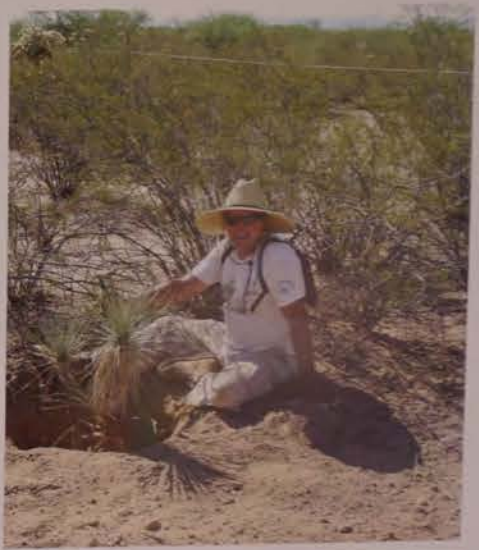
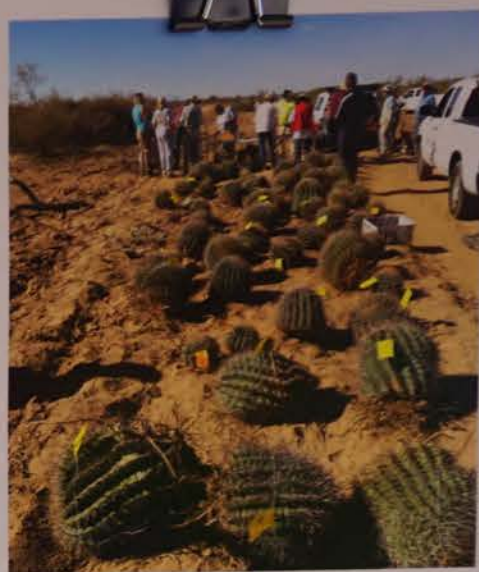
99. Tucson Botanical Garden

100. Tucson Botanical Garden









Desert Breeze

Volume 4, Issue 7
AUGUST 1999

Lois Ladwig and Dick Wiedhopf
report on the TCSS salvage operation

Saving our Native Cactus

Chris Monrad, TCSS member, brought our society the opportunity of salvaging native cacti growing on a 15-acre soon-to-be cleared elementary school site in the Amphi school district. While a portion of the site is being preserved in its natural state, the school district is salvaging some of the plants in the area to be cleared for later use in the school landscaping. Many more plants were growing happily in the area soon to be bulldozed.

With the permission of the school district, Dick Wiedhopf, Vonn Watkins, and Lois Ladwig met Chris's parents and one of their neighbors on the site and counted and marked many ferocactus, echinocereus, and mammillaria as potential salvage plants along with one *Peniocereus greggii*. With this information and salvage permission from Mike Orr of the Amphi construction office, Dick went to the AZ Department of Agriculture's Native Plant Office and obtained tags and seals to allow salvage of 94 plants. Marty Harrow and his son collected approximately 35 cacti and brought them to be included in the successful Silent Auction held June 26th at TBG.

Following this initial collection, more plants were collected and stored at TBG until they

could be placed in new homes in the community. Plants were donated to TBG for use in the gardens and to the Desert Museum to add to the desert setting there. At the July 8 TCSS meeting the *Peniocereus greggii* was a raffle plant and many of the other plants were sold to members of the society. Dick went back to get more tags and seals and another collection effort saved more plants. The salvaged plants will continue to be available to TBG and ASDM and available for purchase.

This is a new direction for TCSS and one that has already provided great satisfaction to participating members whose efforts have saved beautiful cacti scheduled to be destroyed. When walking the site for the survey, it was amazing how many

"Every step revealed another [cactus] soon to be bladed..."

cacti were hiding under the bursage and desert trees. Every step revealed another plant soon to be bladed by a bulldozer. A portion of the site had already been bladed with mammillaria and echinocereus uprooted and cholla broken up and dying. While we were not able to save all the plants on this site, we feel this first effort was very successful and a good learning experience.

We hope to identify a group of members who

want to act as a TCSS salvage team and are looking for more salvage opportunities. There are two more sites posted as potential salvage sites and Dick and Vonn are contacting the owners/developers to see if we may continue our plant rescue.

Thanks to the Amphi school district for allowing us to salvage some of these smaller plants that are not normally saved and to Chris who was instrumental in giving us this opportunity.

The Oro Valley residents care about native vegetation and called the local police to check out what we were doing on the school site. We had the appropriate permit and tags which were verified by the police so there was no problem.

Everyone needs to be aware of the native plant laws and to adhere to them. There is a web site: <http://agriculture.state.az.us/PSD/native-plants.htm> (nativeplants is one word) which has files of the laws and permits required for clearing land and salvaging protected native plants. It also includes a 12-page list of the protected plants of Arizona.

For those who purchased plants and used the plastic flats to carry them home, please bring the flats to the next meeting so we can reuse them in further salvage efforts. If you have extra flats that you want to donate to this effort please bring those to the next meeting on August 5. Thank you.



DIRECTIONS

Wrap nylon cord around plant, drawing closely into the plant and fasten with a knot. No more than 1 inch space shall be between the knot and the plant. Remove the backing from the center portion of the tag and carefully drape it behind the knot. Position the tag so the knot will be centered in the space below. Fold the tag over the knot pressing the tag together making sure the tag cannot slide away from the knot.



~ PLACE KNOT HERE ~

STATE OF ARIZONA
DEPARTMENT OF
AGRICULTURE

Native Plant Tag

UNLAWFUL to transport plant until tag is properly affixed to the plant.

UNLAWFUL to remove this tag from the plant until planted in final location.

FINAL OWNER is to retain this tag as proof of ownership.

VIOLATION of the native plant law may constitute a felony offense and may subject the violator to a fine.

Tag No.
63194

DIRECTIONS

Wrap nylon cord around plant, drawing closely into the plant and fasten with a knot. No more than 1 inch space shall be between the knot and the plant. Remove the backing from the center portion of the tag and carefully drape it behind the knot. Position the tag so the knot will be centered in the space below. Fold the tag over the knot pressing the tag together making sure the tag cannot slide away from the knot.



~ PLACE KNOT HERE ~

STATE OF ARIZONA
DEPARTMENT OF
AGRICULTURE

Native Plant Tag
SAGUARO

UNLAWFUL to transport plant until tag is properly affixed to the plant.

UNLAWFUL to remove this tag from the plant until planted in final location.

FINAL OWNER is to retain this tag as proof of ownership.

VIOLATION of the native plant law may constitute a felony offense and may subject the violator to a fine.

Tag No.
21736

DIRECTIONS

Wrap nylon cord around plant, drawing closely into the plant and fasten with a knot. No more than 1 inch space shall be between the knot and the plant. Remove the backing from the center portion of the tag and carefully drape it behind the knot. Position the tag so the knot will be centered in the space below. Fold the tag over the knot pressing the tag together making sure the tag cannot slide away from the knot.



~ PLACE KNOT HERE ~

STATE OF ARIZONA
DEPARTMENT OF
AGRICULTURE

Native Plant
less than 8"

UNLAWFUL to transport plant until tag is properly affixed to the plant.

UNLAWFUL to remove this tag from the plant until planted in final location.

FINAL OWNER is to retain this tag as proof of ownership.

VIOLATION of the native plant law may constitute a felony offense and may subject the violator to a fine.

Tag No.
6607

Cactus Rescue Crew Program



98095

Cacti Rescued - Since 1999

444 Rescues - 35,235 Volunteer Hours

Years	Rescued Cacti	Rescue Trips	Volunteer Hours	Cactus Tag Costs	# of Crew	Actes Rescued	Rescued Sites
1999-2001	5565	40	600	\$10,000	30	200	15
2002	4282	32	1263	\$9,473	48	969	7
2003	1771	9	647	\$3,892	68	334	5
2004	4382	28	1300	\$10,303	113	608	17
2005	9412	32	2317	\$23,792	203	1046	13
2006	5981	28	2258	\$15,037	177	451	18
2007	5965	20	2426	\$13,290	180	407	7
2008	5038	19	2447	\$15,528	191	169	9
2009	4670	25	2466	\$22,475	194	127	10
2010	3716	24	1991	\$14,778	157	815	10
2011	6435	27	1932	\$12,123	142	386	10
2012	4991	19	1478	\$11,882	152	298	10
2013	4615	24	1761	\$14,207	153	163	5
2014	7700	28	2170	\$19,779	183	387	12
2015	2061	11	842	\$4,189	130	293	8
2016	3828	15	2161	\$9,054	124	302	8
2017	3369	14	2190	\$7,169	127	302	14
2018	8404	24	2602	\$10,564	127	274	14
All Years	62,185	416	32,868	\$227,533	1,800	6,990	180

I BRAKE FOR CACTUS!

PIMA PRICKLY PARK • TUCSON, AZ



TUCSONCACTUS.ORG







Queen of the Night Raffle

Rescue #450, Oct 4, 2019

White Tickets

\$5 each / 5 for \$20

Drawing at 2 PM

Need not be present to win



Can you see this Queen?











HONORING DICK WIEDHOFF AND
HIS FAMILY FOR YEARS OF DEDICATION
AND DEVOTION TO THE TUCSON
CACTUS AND SUCCULENT SOCIETY





Ferocactus emoryi
subs. *rectispinus*
Long Spine Barrel
Cactaceae Baja Calif., Mexico



Ferocactus emoryi
covelei x *rectispinus*
Emoryi Hybrid
USA
Cactaceae











**Mammillaria
geminispina**
Twin-spined cactus
Cactaceae



Opuntia
químilo
Químilo
Cactaceae Argentina, Bolivia







*Agave
murpheyi*
Murphey Agave
Asparagaceae USA, Mexico



10 –
A cactus that
looks like a
mushroom







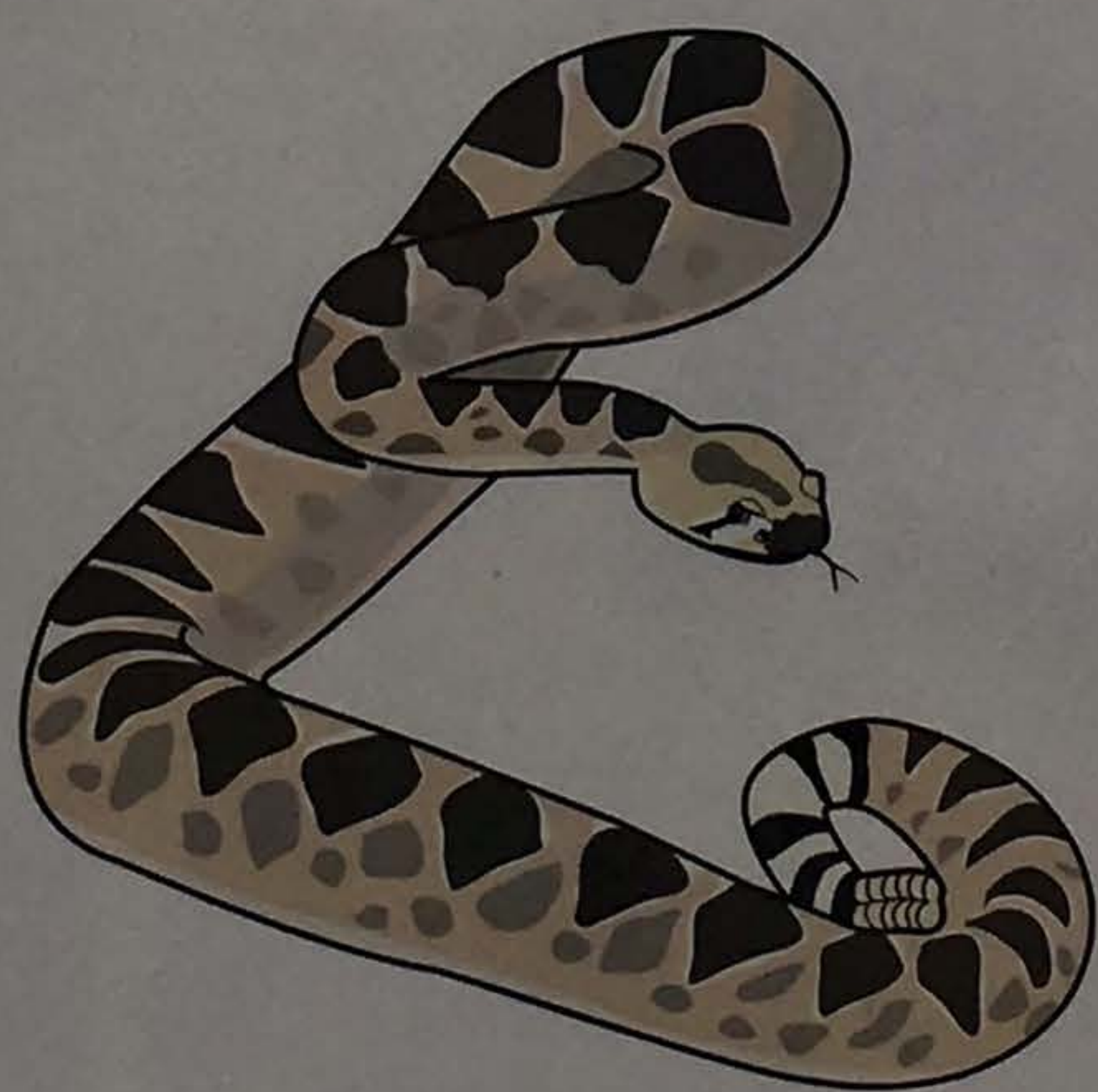




**PIMA COUNTY'S
NURSERY
GROWS NATIVE
PLANTS FOR
PUBLIC PROJECTS**



**WATCH OUT
FOR
VENOMOUS
CREATURES**











NURSERY
LIVE PLANTS
PROJECTS













CUR
Paw
2-18

Cur
dig
3/18
4/21/18

Cur
dig
3-23-18
4-24-18









